

2023 Annual Report

SUPPORTING STRONG AND SAFE NEIGHBORHOODS

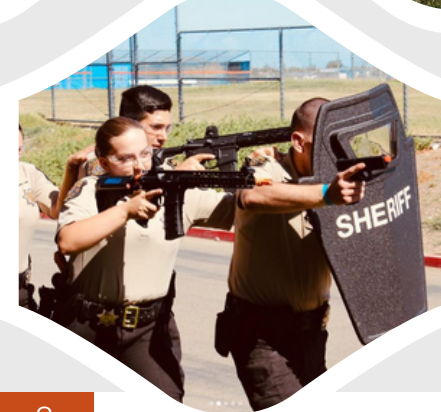
STANISLAUS COUNTY SHERIFF'S OFFICE
JEFF DIRKSE, SHERIFF



Table of **CONTENTS**

Mission, Vision, Values, and Motto	5
Jurisdiction	6
Organizational Chart	8
Financial Statistics	10
Average Response Time	11
Calls for Service (CFS)	12
Crime Incidents	13
Arrests & Citations	15
Special Investigations Unit (SIU)	16
Use of Force	18
Internal Affairs	21
Traffic Collisions (On-Duty)	22
Adult Detention Administration	23







**SUPPORTING
STRONG
AND SAFE
NEIGHBORHOODS FOR
INDIVIDUALS
AND FAMILIES
TO THRIVE**

Board of Supervisors Priority

OUR MISSION

Protecting our communities by building trust, reducing crime, and promoting safety through enforcement, prevention, and education

Vision

We will be a source of pride – recognized for our effective, innovative, and thoughtful role in the communities we serve.

Motto

Building Trust, Reducing Crime, and Promoting Safety

Core Values

RESPECT

For yourself, the badge, the department, and the community.

INNOVATION

We will be creative and innovative in our delivery of professional law enforcement service.

COURAGE

Is not the absence of fear but the initiative to make tough decisions under stress and pressure.

INTEGRITY

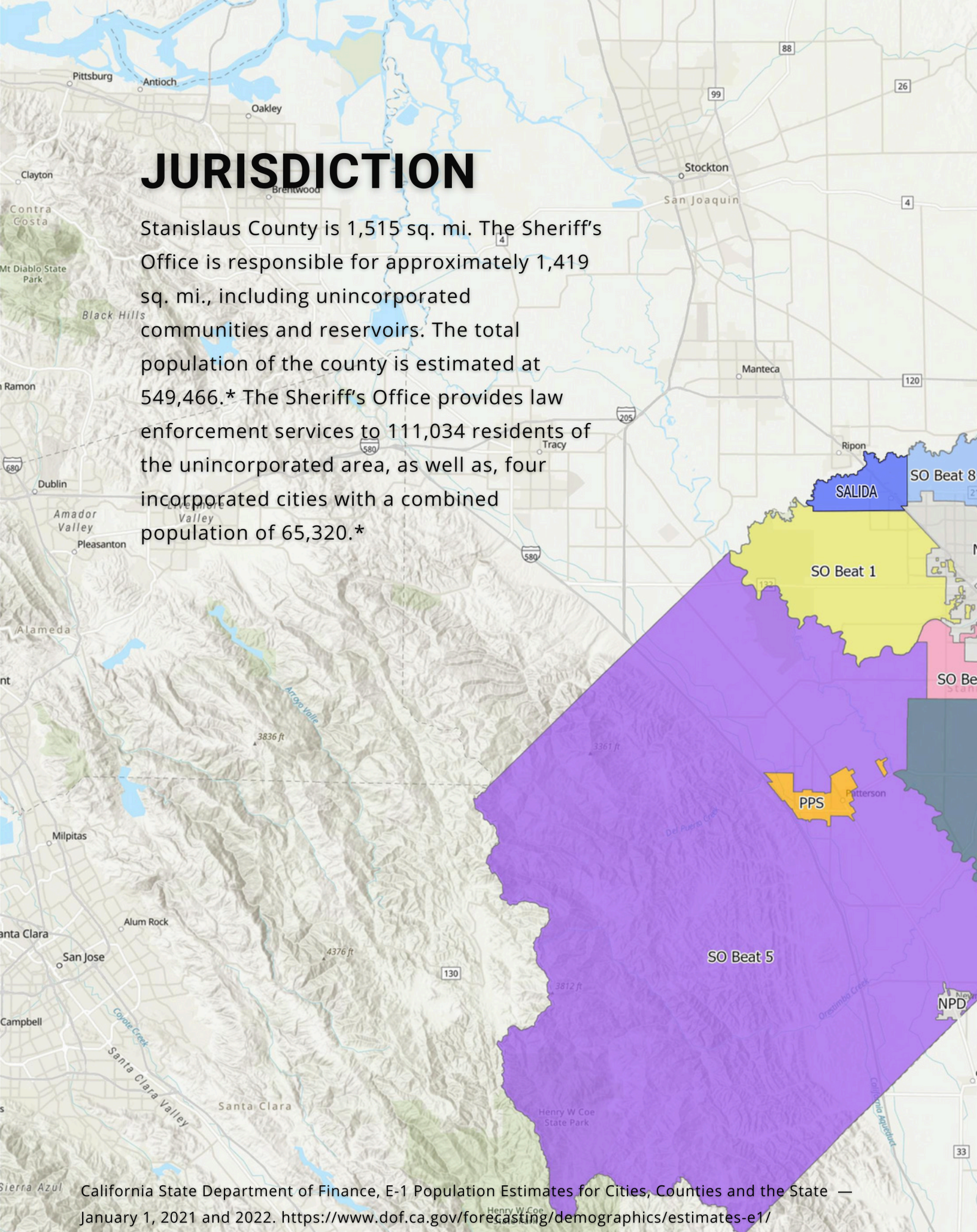
Committed to honest, trustworthy, transparent policing with fairness and consistency by holding ourselves to the highest standards of moral and ethical conduct.

TEAMWORK

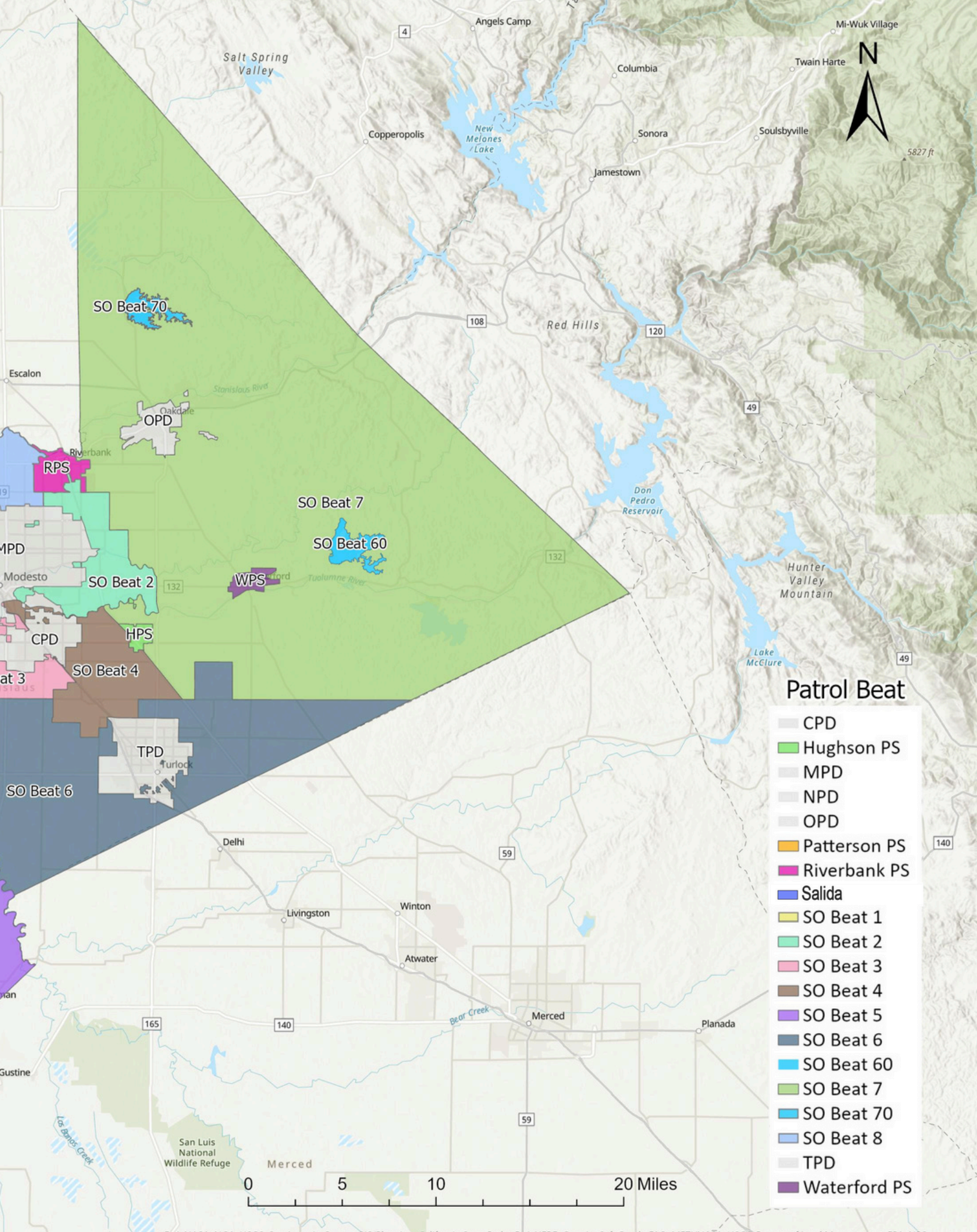
Recognizing and building on the strengths of all. We recognize that we have to work together to achieve our goals.

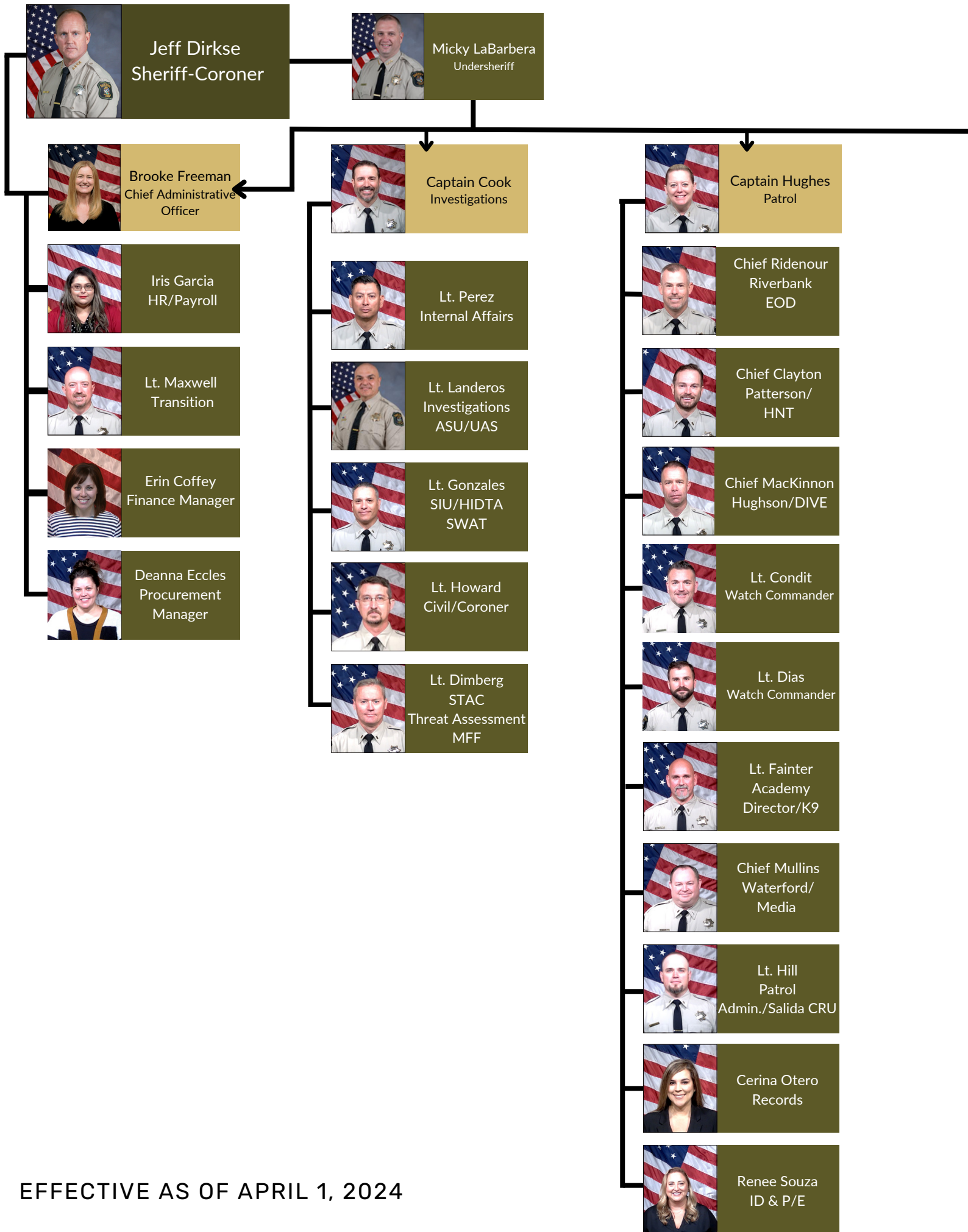
JURISDICTION

Stanislaus County is 1,515 sq. mi. The Sheriff's Office is responsible for approximately 1,419 sq. mi., including unincorporated communities and reservoirs. The total population of the county is estimated at 549,466.* The Sheriff's Office provides law enforcement services to 111,034 residents of the unincorporated area, as well as, four incorporated cities with a combined population of 65,320.*



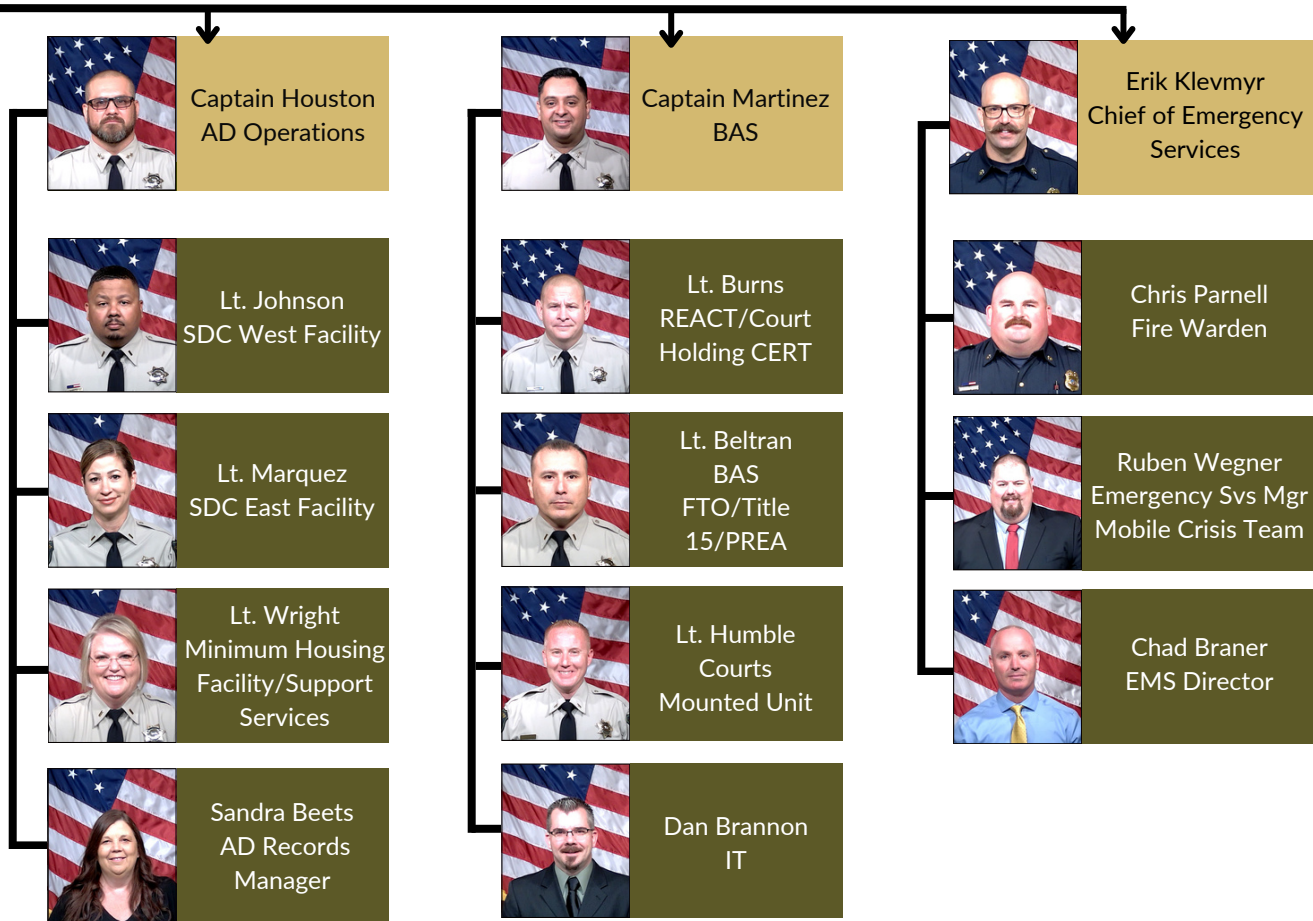
California State Department of Finance, E-1 Population Estimates for Cities, Counties and the State — January 1, 2021 and 2022. <https://www.dof.ca.gov/forecasting/demographics/estimates-e1/>





EFFECTIVE AS OF APRIL 1, 2024

ORGANIZATIONAL CHART

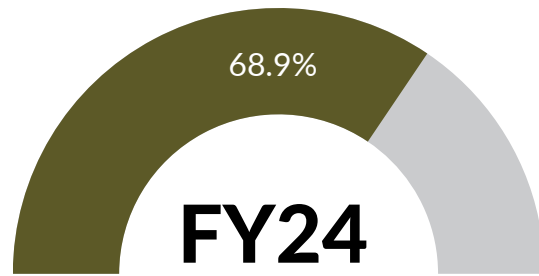
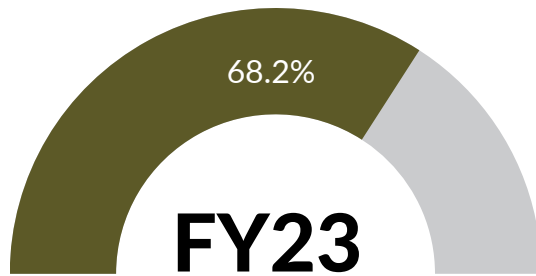


EFFECTIVE AS OF APRIL 1, 2024



FINANCIAL STATISTICS

Percentage of Budget Funded by General Funds



Fiscal Year 2023

July 1, 2022 - June 30, 2023

Fiscal Year 2024

July 1, 2023 - June 30, 2024

Compared to the prior fiscal year, the actual total revenue was decreased in FY 2023 by:

-15.15%



Compared to the prior fiscal year, the actual total gross costs decreased in FY 2023 by:

-1.05%

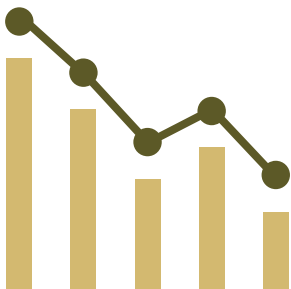


Compared to the prior fiscal year, total allocated positions increased by:

6.42%

Total allocated Positions

853



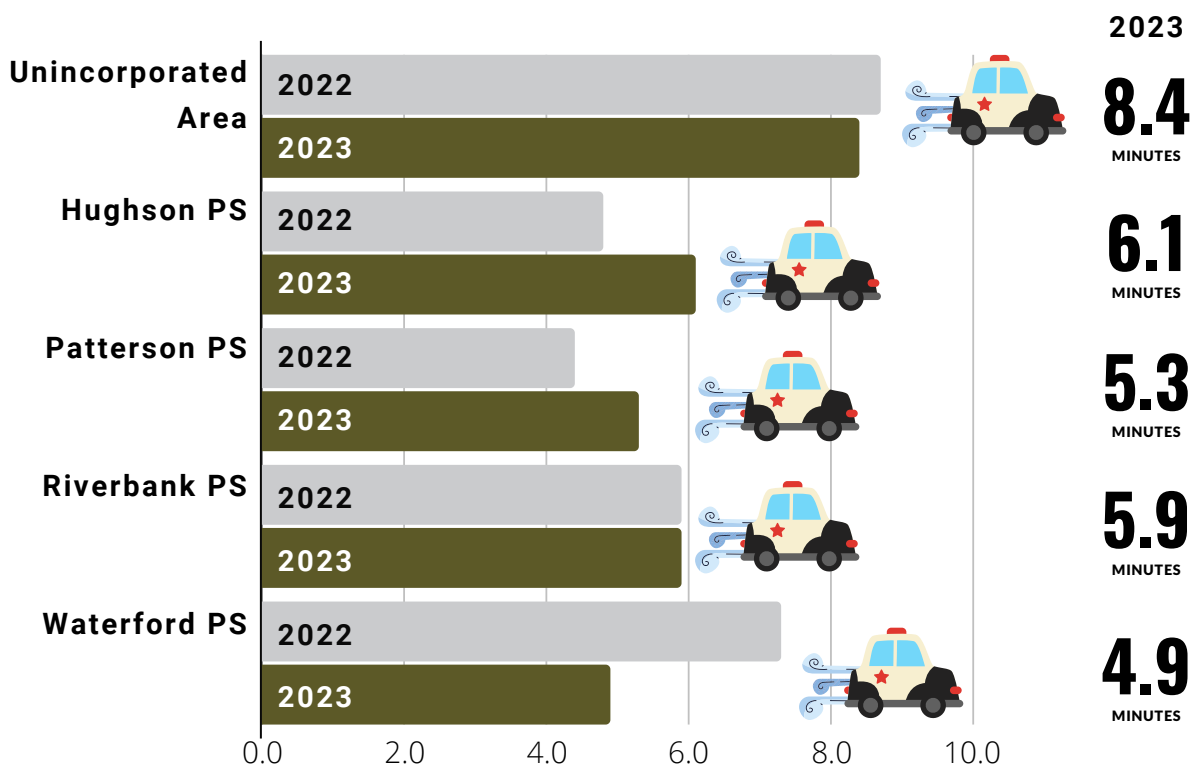
AVERAGE RESPONSE TIME FOR PRIORITY 1 CALLS

Due to the shortage of resources and the goal of achieving effective workflow, calls are prioritized based on circumstances that a reporting party provides a call taker at the dispatch center.

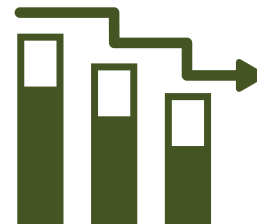


Response time is defined as the time interval between when a call is dispatched to a Deputy-Sheriff and when the Deputy-Sheriff arrives at the scene.

Priority 1 call is defined as the highest priority in which an event is in progress or just occurred and there is an immediate threat to life or great bodily harm (e.g, active shooting, burglary in progress, etc.)



Average response time for priority 1 calls has decreased in the unincorporated area and contract cities, like Riverbank and Waterford.

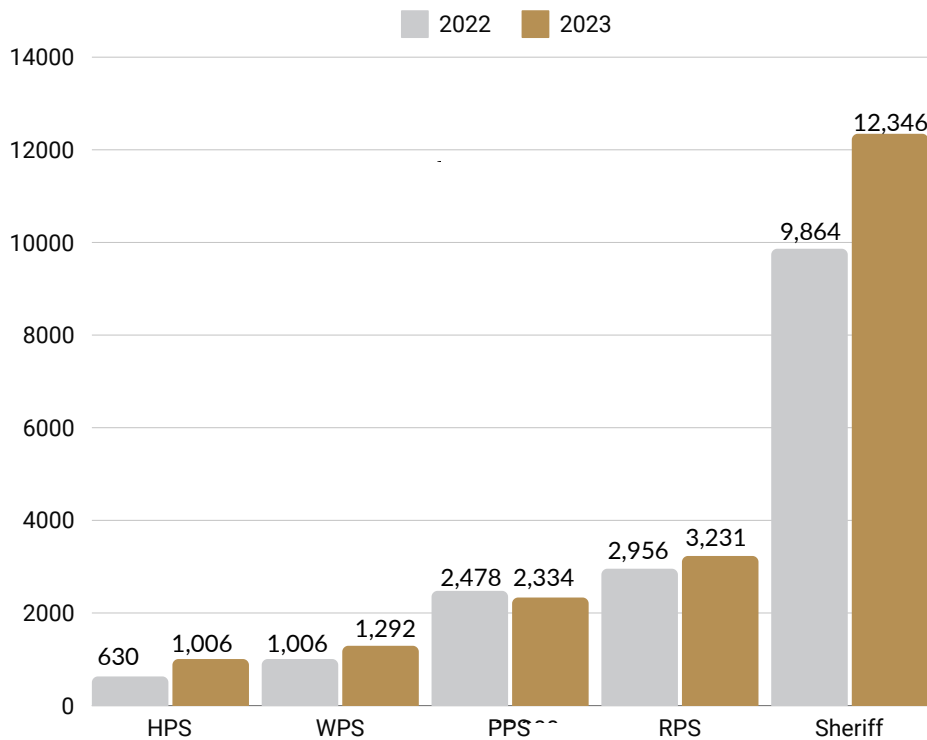


Compared to 2022, the average response time in 2023 decreased by 3.5 % in the unincorporated area.



CALLS FOR SERVICE (CFS)

Deputy-Initiated Activity (DIA)



In 2023, Deputy-Initiated Activity (DIA) increased by 19.3%.



The increase in Deputy Initiated Activity (DIA), in conjunction with a decline in Non-DIA incidents, may point to the success of our proactive policing initiatives. This positive shift potentially reflects enhanced officer presence and a heightened commitment to preventative crime measures.

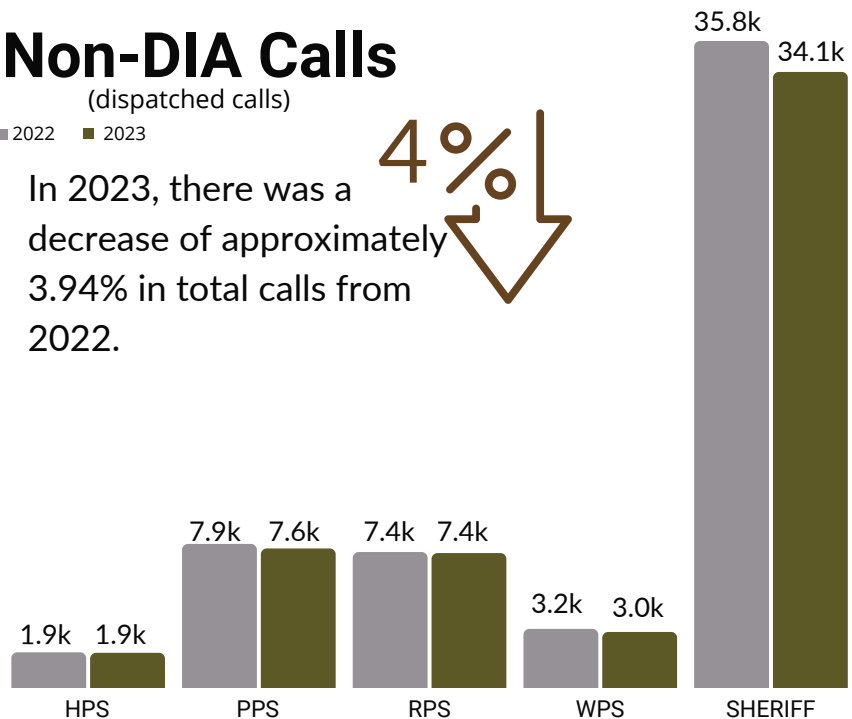


Non-DIA Calls

(dispatched calls)

■ 2022 ■ 2023

In 2023, there was a decrease of approximately 3.94% in total calls from 2022.



CRIME INCIDENTS

There is a Public Crime Map application available for residents. The [guide](#) will help you navigate the application. Please visit the link below.



- <https://scsdonline.com/online-svcs/crimemapping-1.html>



The Uniform Crime Reporting (UCR) Program generates reliable statistics for use in law enforcement. It provides information for students of criminal justice, researchers, the media, and the public. The program provides crime statistics since 1930. Stanislaus County complied with the program, and all reported crimes are indexed accordingly.

The table below shows the yearly totals of the UCR Part 1 crime index. Compared to 2022, the total number of UCR Part 1 crimes decreased in 2023.

The overall total of reported UCR Crimes in 2023 decreased from 2022 by 4%.



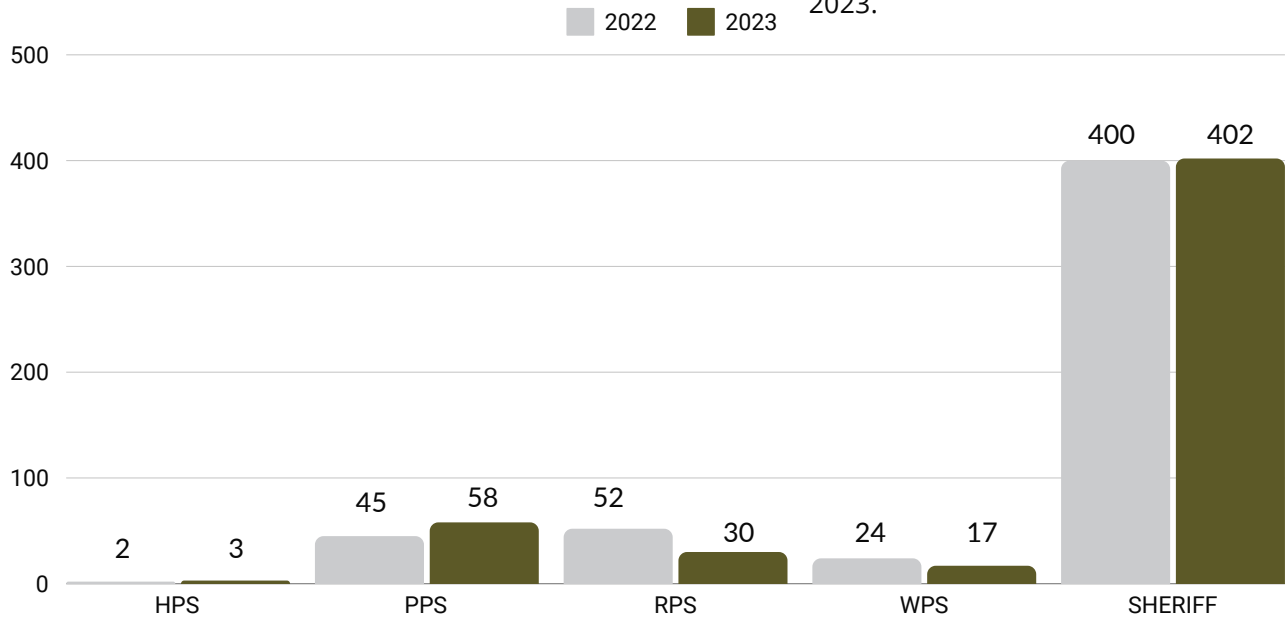
UCR Part 1 Crime Index	Hughson		Patterson		Riverbank		Waterford		Unincorporated	
	2022	2023	2022	2023	2022	2023	2022	2023	2022	2023
Total	57	46	404	361	421	473	109	107	1,665	1,566
Violent Crime	2	3	45	58	52	30	24	17	400	402
Homicide	0	0	1	0	2	0	0	1	12	5
Forcible Rape	0	0	5	4	3	2	1	0	27	40
Robbery	1	0	12	12	21	11	9	3	89	105
Aggravated Assault	1	3	27	42	26	17	14	13	272	252
Property Crime	55	43	359	303	369	443	85	90	1,265	1,164
Burglary	8	10	61	61	57	40	11	12	356	383
Larceny Theft	25	17	166	147	247	337	47	45	649	553
Theft From Vehicle	9	10	50	39	22	33	5	7	185	162
Motor Vehicle	13	5	81	54	39	30	17	25	46	51
Arson	0	1	1	2	4	3	5	1	29	15



VIOLENT CRIME INDEX

The overall number of violent crimes in the contract cities and unincorporated area decreased in 2023.

2.5% ↓

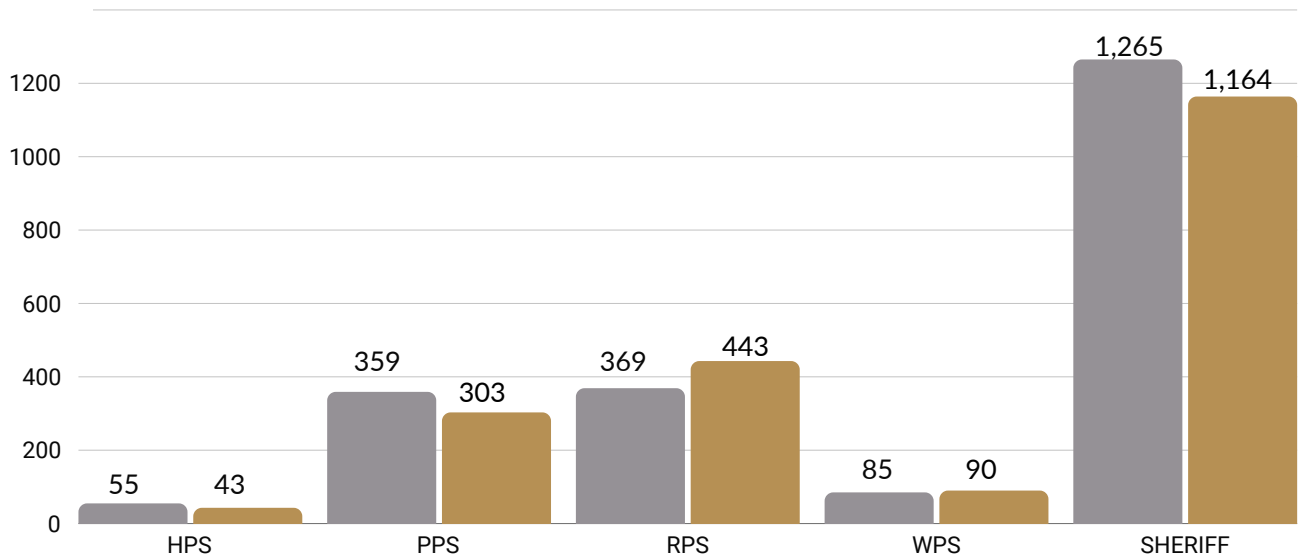


The overall number of property crimes in the contract cities and unincorporated area decreased in 2023.

4.2% ↓

PROPERTY CRIME INDEX

2022 2023





ARRESTS & CITATIONS

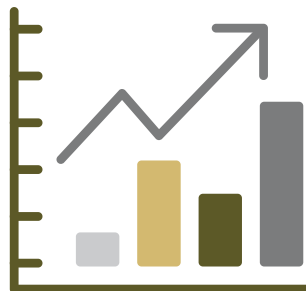
ARRESTS

In 2023, the total number of arrests for felony charges decreased in all contract cities. The total number of arrests for misdemeanor charges decreased as well.



ARRESTS	HUGHSON		PATTERSON		RIVERBANK		WATERFORD		UNINCORPORATED	
	2022	2023	2022	2023	2022	2023	2022	2023	2022	2023
Total	135	81	427	360	467	379	170	146	2,249	2,007
Felony	46	34	190	167	187	202	74	65	1,192	1,130
Misdemeanor*	89	47	237	193	280	177	96	81	1,057	877

*Includes citations



CITATIONS

In 2023, the total number of citations for various offenses (including traffic, drug, parking, and other misdemeanors) increased in the contract cities of Patterson and Waterford. Conversely, these numbers decreased in Hughson, Riverbank, and unincorporated areas.

CITATIONS	HUGHSON		PATTERSON		RIVERBANK		WATERFORD		UNINCORPORATED	
	2022	2023	2022	2023	2022	2023	2022	2023	2022	2023
COUNT	595	528	1,731	1,925	2,090	1,613	527	663	2,451	2,011

*Please note the data used was generated using individual agency Records Management System (RMS). The information is for comparison purposes only, as the statistics are not official and are subject to change.

Special Investigations Unit (SIU)

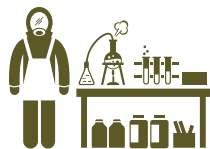
Lieutenant Richard Gonzales

The Stanislaus County Special Investigations Unit (SIU) is a county-wide multi-agency taskforce responsible for enforcing drug laws and investigating violent crimes. The unit consists of 20 sworn/civilian staff. The unit conducted many operations with allied agencies (e.g., California Highway Patrol, Stockton Drug Enforcement Administration, FBI, HSI and local law enforcement agencies).



173 Arrests

(including 58 arrests for Human Trafficking)



2 Drug Lab



353 Search Warrants



20 Buys

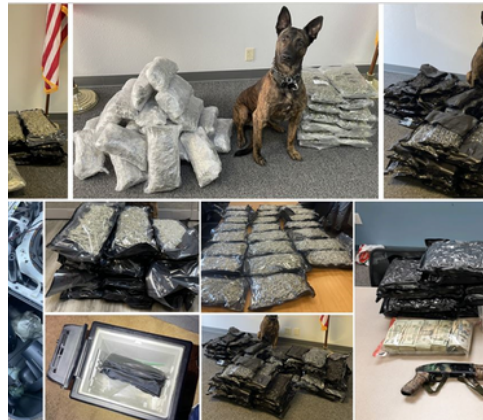
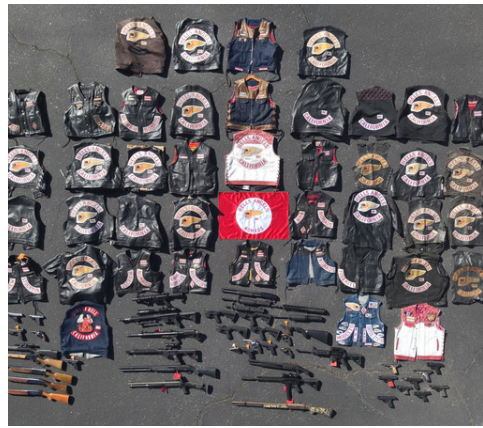
(including 16 Control Buys and 4 Buy Busts)

SEIZURE DATA

2023

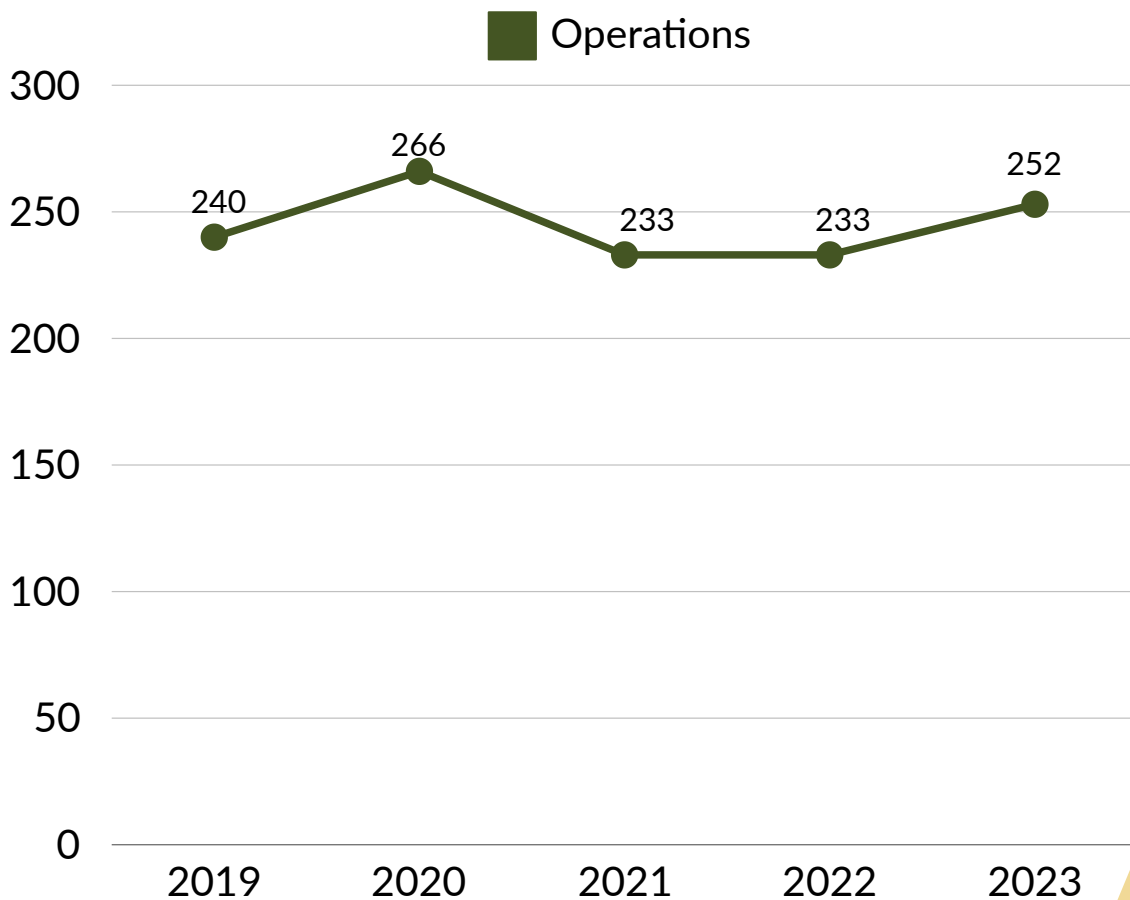
HEROIN (lbs)	12.11
FENTANYL PILLS (gm)	10,178
FENTANYL POWDER (lbs)	58.76
COCAINE (lbs)	94.71
METHAMPHETAMINE (lbs)	9.37
PROCESSED MARIJUANA (lbs)	4,268
OUTDOOR MJ PLANTS - PRIVATE	1,492
OUTDOOR MJ PLANTS - PUBLIC	0
INDOOR MJ PLANTS	23,004
THC EXTRACT / BHO (lbs)	21.04
MISCELLANEOUS PILLS (gm)	10,033
PSILOCYBIN MUSHROOMS (gm)	479
DROP THE DRUGS (lbs)	1,220
PARCELS	128
CASH SEIZED (USD)	\$ 2,648,580
FIREARMS SEIZED	178





USE OF FORCE

The Stanislaus County Sheriff's Office requires a Use of Force report on all incidents when force is used. Not all use-of-force incidents result in injuries. Use of force includes a physical control hold, restraint device, take down, and/or the use of a weapon. A supervisor reviews all use of force reports to ensure the use was appropriate and within the guidelines of the Sheriff's Office policy and the law (visit [Policy, Training, & Legislative Affairs of the Stanislaus County Sheriff's Office](#)). If a deputy misused force, an internal affairs investigation is conducted. The deputy could receive training, discipline, or termination. A separate criminal investigation could be initiated, leading to prosecution if it is determined that a violation of law/civil rights occurred.



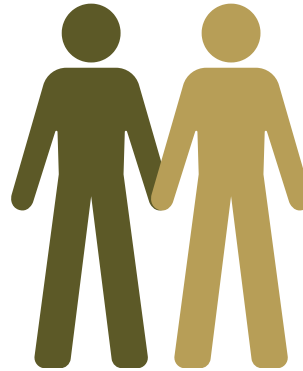
In 2023, there were 252 incidents in which force was used. These incidents were reported from the Operations Division.

BY THE NUMBERS



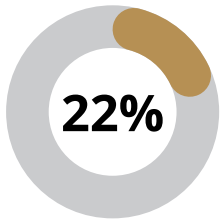
413

deputies were involved in 253 use of force incidents in 2023.

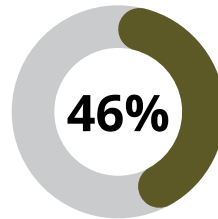


253

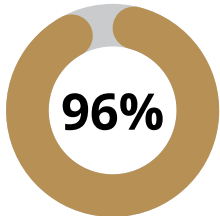
civilians experienced force used by a deputy(s) in 2023.



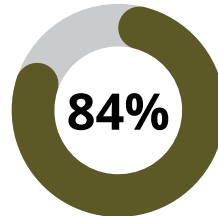
Of 252 primary deputies using force, 56 had less than 6-years experience working in law enforcement.



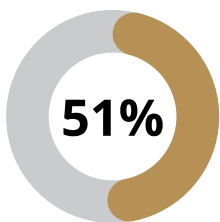
117 subjects were actively resistant to law enforcement commands.



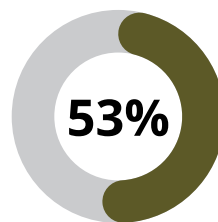
Of 252 primary deputies who used force, 243 were male.



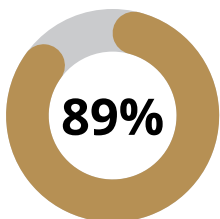
209 subjects were male.



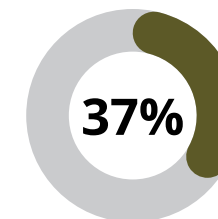
Of 252 primary deputies who used force, 129 were White.



149 subjects were perceived to be Hispanic.



Of 252 Use of Force incidents, 230 resulted in the arrest of offender(s).



89 subjects displayed signs of mental disability, or drug/alcohol impairment.

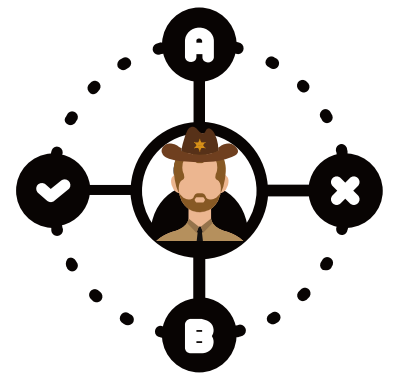
USE OF FORCE TRAININGS

The Stanislaus County Regional Training Center implemented multiple de-escalation and decision-making trainings. This includes stress inoculation scenario training and the use of the Force Option Simulator. During stress inoculation training, participants are presented with multiple split-second scenarios to improve their decision-making skills. The Force Option Simulator is used to put participants in real-life incidents and educate them better in de-escalation skills and the decision-making process. The aim is to give participants the skills that help them understand decisions, define problems, evaluate options and make the best choices.



"There's a moment when you have to make a split-second decision that will form you for the rest of your life."

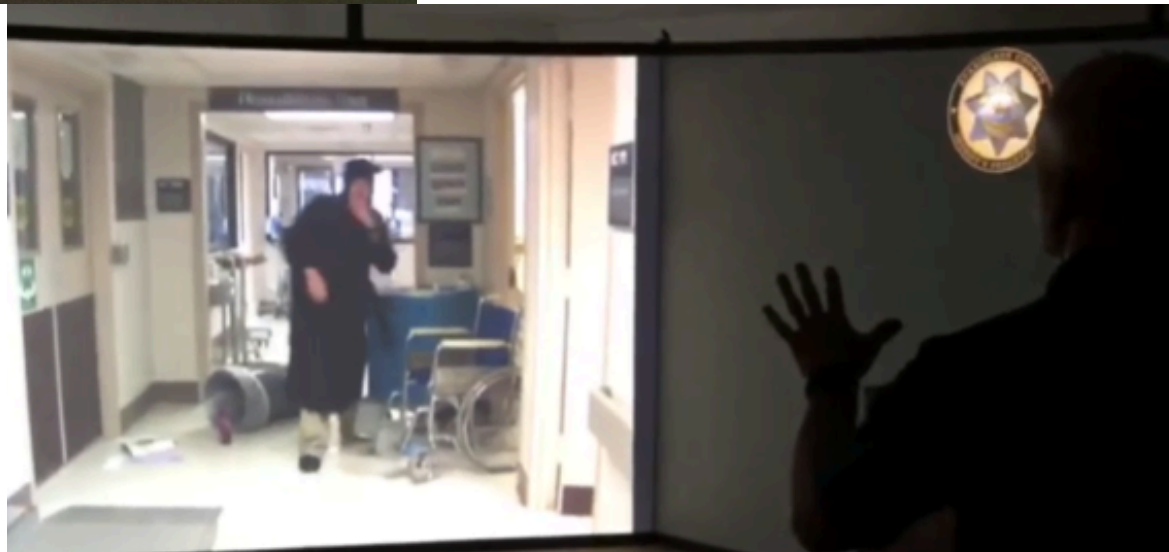
Dash Mihk



"Sir, Are you okay?"

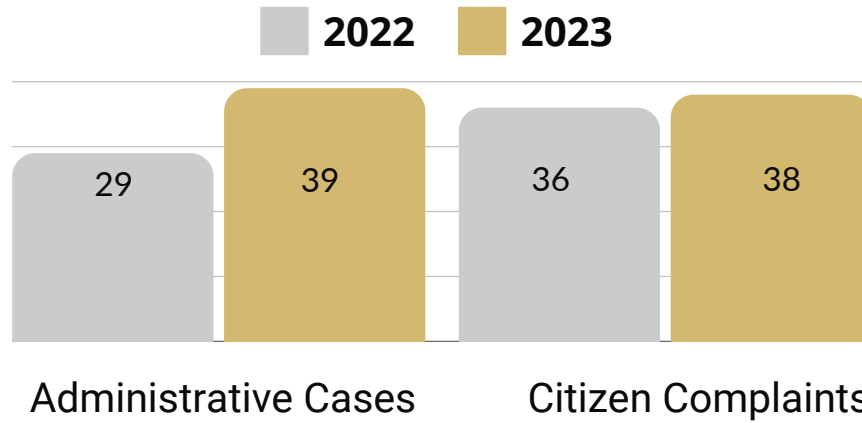
"What can I do to help you?"


"I am here to help you, not to hurt."



INTERNAL AFFAIRS

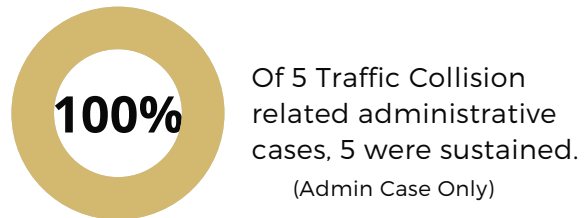
Information includes data collected and verified by the Internal Affairs Division on February 27, 2024. The received dates of cases are generated in accordance with when the complainant reported the event to the Internal Affairs division. The following reports are based on cases with a noted received date between January 1, 2023, and December 31, 2023. Use of force reports are made on all incidents when a deputy uses force on a civilian (takedown, physical force, taser, baton, impact weapons, and deadly force). The report does not indicate that/if any administrative violations occurred. If a use of force is flagged for possible violations, it will be referred to Internal Affairs.



34%  **8%**

The total number of Administrative Cases in 2023 increased by 34% compared to 2022.

The total number of Citizen Complaints in 2023 increased by 8% compared to 2022.



DISCIPLINE IMPOSED

1

Termination

5

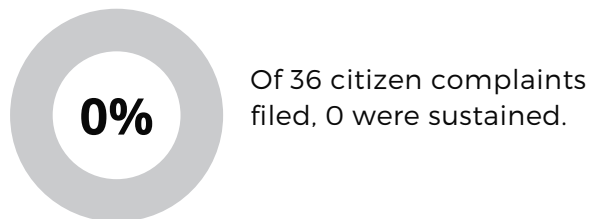
Censurable Conduct

6

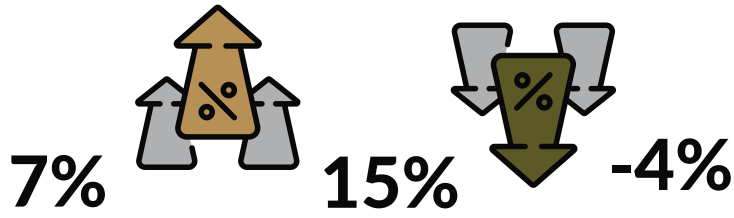
Suspensions

5

Counseling Memo



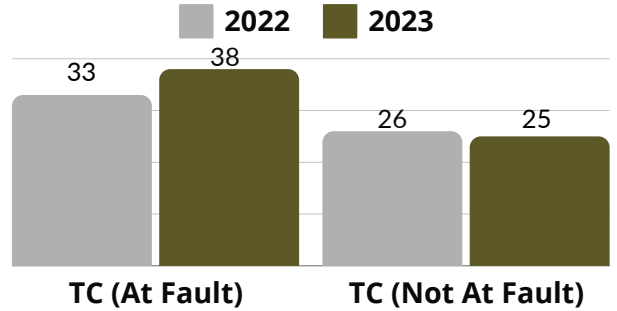
TRAFFIC COLLISIONS (On-Duty)



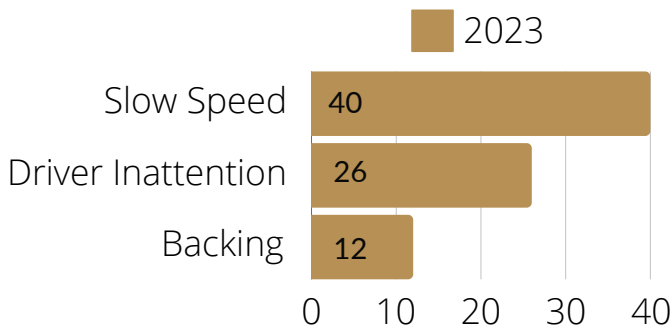
The total number of all Traffic Collisions in 2023 increased by 7% compared to 2022.

The total number of At-Fault Traffic Collisions in 2023 increased by 15% compared to 2022.

The total number of Not At-Fault Traffic Collisions in 2023 decreased by 4% compared to 2022.



TOP 3 CAUSES



EVOC Training



Emergency vehicle operation is one of law enforcement's primary activities, but officers are killed every year in their patrol cars. To prevent this, the Regional Training Center provides the deputy with courses on pursuit driving, vehicle safety, professional police driving, driving techniques, and emergency driving techniques.

BY NUMBERS

64

64 Employees were involved in TC

0

No inmates were involved in TC

2

2 Employees were injured from traffic collisions



ADULT DETENTION ADMINISTRATION

Captain Frank Martinez

The Stanislaus County Adult Detention Facilities were designed and constructed to provide the citizens of Stanislaus County with a safe and secure facility that complies with and exceeds the standards articulated by local, state, federal, and professional agencies

Bureau of Administrative Services (BAS)

AD Lieutenant Beltran

The BAS unit is the Adult Detention administrative office that coordinates Adult Detention Advanced officer in-service training, the correctional academy and encompasses smaller units including Adult Detention FTO Unit, Classification Unit, Correctional Investigative Unit, Adult Detention Defensive Tactics Unit, Jail Based Competency Treatment Program, Adult Detention Scheduling BSCC Title 15 and 24 compliance in Jail Facilities, PREA (Prison Rape Elimination Act Compliance), and AD K-9 Unit.

COURSE

2022-2023
IP STARTED

HSE	198
Microsoft Excel	127
Microsoft Word	146
Seeking Employment	196
LCA Employment	8
STIC	3
Women of Wisdom	***
Battling Shadows (MRT)	***
SUDS	***
Child Welfare	11
Offender Corrections	134
Principles and Values	13
Cognitive Awareness	69
Intro to Programs	***
MJC-Sociology	Started 23-24
Work Ready	Started 23-24
Landscape	16
Welding	10
Sewing	3
Fetch	3
Ag	22
Janitorial	4
ACCI Packets	***

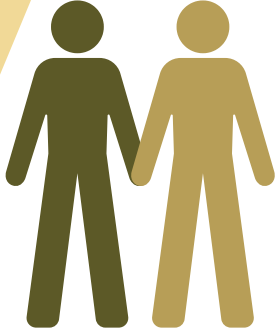
Jail Alternatives

AD Lieutenant Burns

The Jail Alternatives Unit offers a Home Detention Program (HD), and an Alternative Work Program (AWP). HD allows an inmate to serve their sentence in their Stanislaus County home and continue to work at their regular job. AWP allows an inmate to perform eight hours of general labor for every one day of jail time.



BY THE NUMBERS



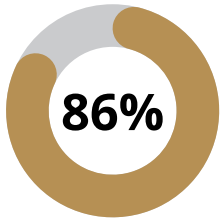
1469

average jail population

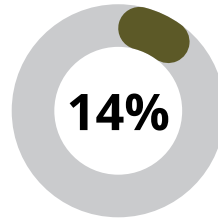
212.62 days

average length of jail stay

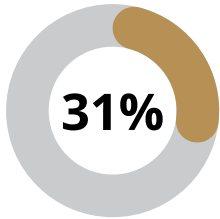
From January 1, 2023 to December 31, 2023 there were 16,837 bookings. 13,191 were male and 3,641 female.



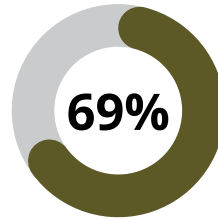
Average of 1261 males incarcerated.



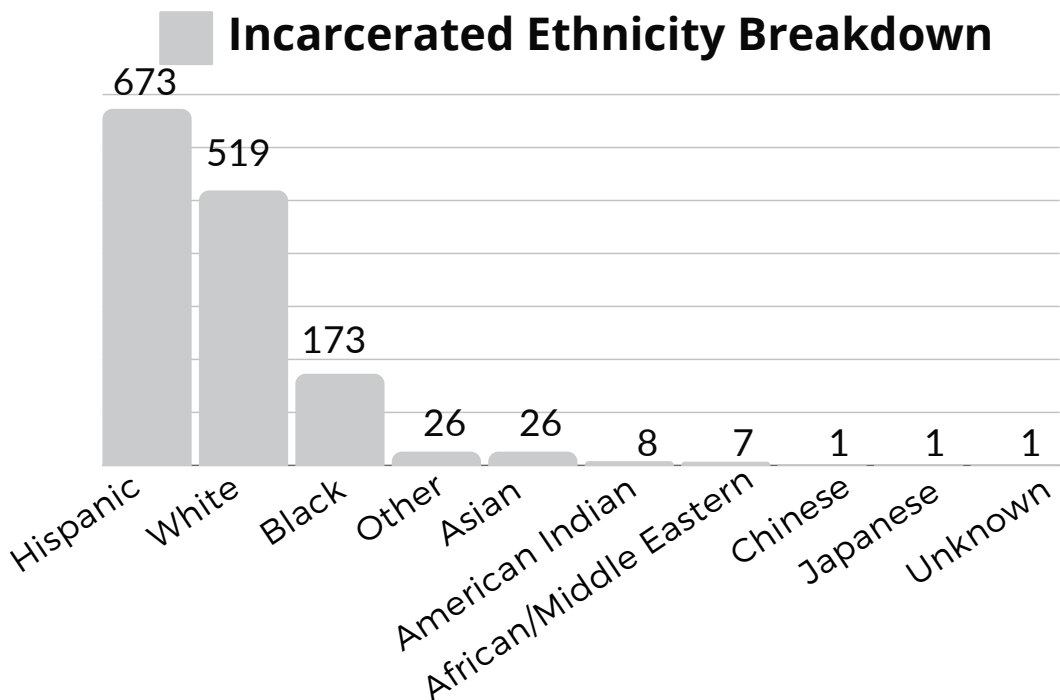
Average of 208 females were incarcerated.



Of 1469, 461 were sentenced.



Of 1469, 1008 were unsentenced.





2023 ANNUAL REPORT

BUILDING TRUST, REDUCING CRIME, AND
PROMOTING SAFETY



**STANISLAUS COUNTY
SHERIFF'S OFFICE**

JEFF DIRKSE, SHERIFF